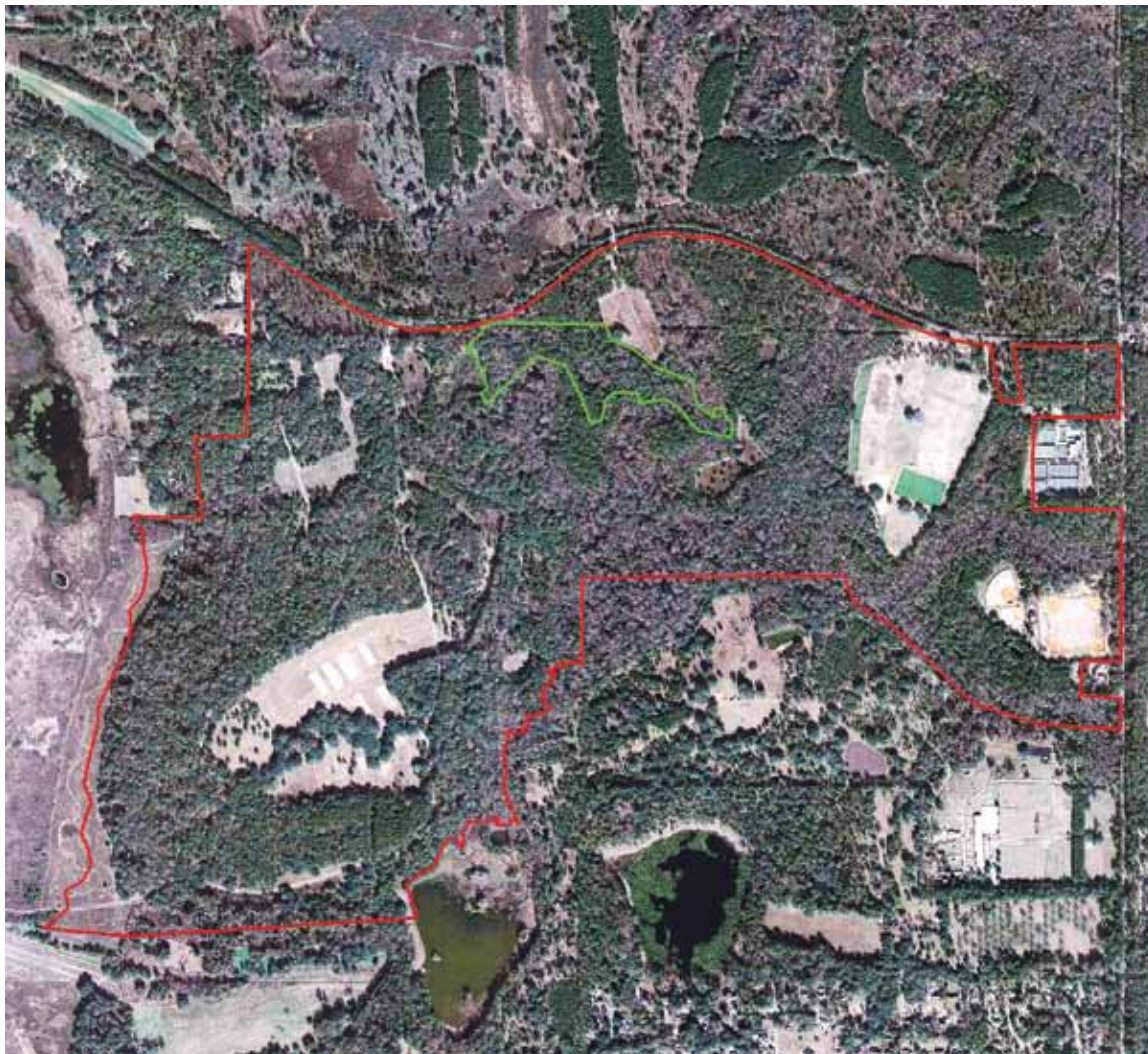


Elinor Klapp-Phipps Park Update

A Success Story for Golden Banded-Skippers and Land Managers

by Dean Jue, Sally Jue,
and David Harder



A map of Elinor Klapp-Phipps Park. Red line is the park boundary. Green line demarcates the approximately 19.5 acres Golden Banded-Skipper management area.



A Golden Banded-Skipper nectaring on Starry Rosinweed (*Silphium asteriscus*) in Phipps Park. July 6, 2008.

Elinor Klapp-Phipps Park

is a wonderful 670-acre preserve just north of Tallahassee, Florida. In 2007, we authored a Definitive Destination article about this location (*American Butterflies*: 15, no. 3-4), in which we recorded approximately 80 butterfly species within the park over a six-year time span starting in 2001.

With the designation of both a butterfly and a bluebird trail in 2006 and the printing of a butterfly and bluebird brochure in 2007, Phipps Park has become a popular destination for butterflyers from both northern states and south Florida. Without a doubt, the specialty of the park is Golden Banded-Skipper, first discovered there by David Harder in July 2003. The 2007 article noted a peak number

of 17 Golden Banded-Skippers recorded during an August 2005 survey.

In March 2006, a large prescribed burn that encompassed most of the known Golden Banded-Skipper habitat in the park caused a dramatic decline in the population of this butterfly.

This article updates our experiences working with the land managers at Elinor Klapp-Phipps Park and describes the results of Golden Banded-Skipper surveys at the park through 2010. It outlines a success story, illustrating how cooperation between land managers and butterfly watchers can result in a “win-win” situation for both parties.