

Badger ButterFlyer

The e-Newsletter of the Southern Wisconsin Butterfly Association

JULY, 2015

WEB SITE: <http://www.naba.org/chapters/nabawba/>

1 NEXT FIELD TRIPS Mark your calendar!

NEW: Butterflies of Walking Iron County Park **Saturday, July 25**

9:30 a.m. to 11:30 a.m. **(Note change in times.)**
Dane Co.

Butterfly enthusiasts Karl and Dorothy Legler will lead this two hour morning walk at Walking Iron County Park. Walking Iron has 288 acres and is owned by Dane County; the prairies and oak savannas are managed for the County by The Prairie Enthusiasts. We will observe a variety of butterflies as they take nectar from wildflowers and learn about their identification, behavior, and lifestyle. We will walk about 1-2 miles.

Bring binoculars--the closer they focus, the better. (We have a few extra binoculars.) Wear long pants and a hat for protection from the sun. Wear sturdy walking shoes and bring water. This is a joint trip of the Southern Wisconsin Butterfly Association and the Madison Audubon Society.

Directions: Meet at west entrance to Walking Iron at 9:30 a.m. (about 20 miles west of Middleton). From Madison drive west on Hwy 14. About 1 mile past Mazomanie turn right (north) on Mahocker Rd. Go 3/4 of a mile and turn left (west) on Hudson Road for 1/4 mile. Turn right (north) onto Beckman Road. Go 3/4 mile and look for the parking lot on the right. Call Karl, only if you have a question about the trip, at (608) 643-4926 (Sauk City).

Butterflies of Avoca / Blue River Area **Saturday, August 8, 10:30 a.m.- 4 p.m.**

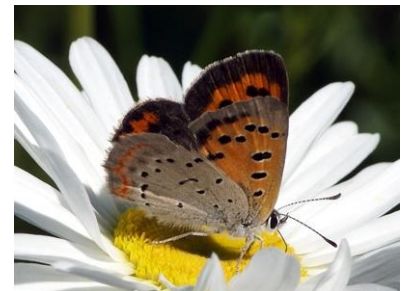
In some years this can be the best butterfly trip of the year! This trip will highlight several areas in the **Lower Wisconsin State Riverway**, including Avoca Prairie and Savanna State Natural Area in Iowa County, and Blue River unit in Grant County. Leader will be **Mike Reese**. We expect to see late butterflies and several unusual southern immigrants. A hat and long pants are recommended. Bring a lunch and binoculars (the closer they focus the better). A few extra binoculars are available. This is a joint trip of the Southern Wis. Butterfly Association and Madison Audubon Society.

Meet at 10:30 a.m. Allow 50 minute travel time from Middleton. **DIRECTIONS:** Take Hwy 14 west to Lone Rock, south on Hwy 130 then turn right on Hwy 133. Go west about 5.0 miles, turn right on Hay Road, and drive north to the parking lot just before the creek. Call Mike at (920) 787-2341 only if you have a question about the trip.

IN THIS ISSUE:

1. NEXT FIELD TRIPS.

- ▶ **NEW:** Butterflies of Walking Iron County Park.
 - ▶ Butterflies of Avoca/Blue River Area.
 - ▶ Butterflies & Blossoms at Pheasant Branch Conservancy.
- ##### 2. Highlights of Recent Trips.
- Pleasant Valley.
 - Butterflies of Cherokee Marsh.
 - Mud Lake Butterfly Count.
 - Butterflies of Swamp-Lover's Preserve.
- ##### 3. Threatened or Endangered.
- ##### 4. Texas Butterfly Festival 2015.



American Copper

Butterflies and Blossoms at Pheasant Branch Conservancy

Saturday, August 15: 10:00 a.m.- noon

Join us on a walk through the lovely Pheasant Branch Conservancy in Middleton. The many beautiful asters should be in bloom, and we hope lots of butterflies will be nectaring on these flowers. We can expect several species, including Monarchs, Black Swallowtail, sulfurs, blues, and possibly some southern immigrants, such as Common Buckeye and Painted Lady. You never know what you may find! We will also learn more about restoration efforts at the conservancy. Long pants, a hat, water, and sturdy hiking shoes are recommended. Close-focusing binoculars are also useful. (We will have a few extra binoculars.) We will hike about 1.2 miles. Leader is **Dreux Watermolen**. Co-sponsors



Black Swallowtail

are SWBA, Friends of the Pheasant Branch Conservancy and the Madison Audubon Society.

Contact the trip leader only if you have a question about the trip: Dreux Watermolen: (608) 266-8931, dreux.watermolen@Wisconsin.gov .

Meet in Middleton at 10:00 a.m. The trip will last about 2 hours.

Directions: At the west end of Lake Mendota take Allen Boulevard north, then turn left on Century Avenue (Co. M). Track your mileage as you turn right onto Old Creek Road and then right on Pheasant Branch Road going north 1.2 miles to the small county parking lot on the right, at the beginning of the gated road.

2 HIGHLIGHTS OF RECENT FIELD TRIPS

HIGHLIGHTS of Butterflies of Pleasant Valley

It started raining about 1/2 hour before the field trip. We expected that no-one would show up. But we were surprised when 27 people showed up IN THE RAIN! We waited for 15-20 minutes and the rain quit, so we proceeded with the tour. But the wet vegetation and overcast skies were not conducive to seeing very many butterflies. However, the Prairie plants were still there to enjoy, and we managed to get glimpses of **Aphrodite Fritillary**, **Baltimore Checkerspot**, and a few other butterflies. We enjoyed eating lunch and some desserts/snacks that were provided by Kathy and Tom Brock and Dorothy Legler.

HIGHLIGHTS of Butterflies of Cherokee Marsh

Sunny skies served to encourage 45 people to attend this field trip! Several people were "deputized" to help lead the quest for butterflies. Thanks to Jan Axelson, Dan Sonnenberg, Douglas Buege, Peter Fissel and Dave Hogg for helping with this trip. We found 23 butterfly species. Highlights were Baltimore Checkerspot, Bronze Copper, Hickory Hairstreak, Eyed Brown and Peck's Skipper. We found



Cabbage White 1
Clouded Sulphur 3
Orange Sulphur 1
Bronze Copper 1
Coral Hairstreak 1
Banded Hairstreak 4
Hickory Hairstreak 1
Eastern Tailed-Blue 1
Summer Azure 3

Great Spangled Fritillary 6
Pearl Crescent 4
Baltimore Checkerspot 3
Mourning Cloak 2
Red Admiral 1
Red-spotted Purple 1
Viceroy 2
Eyed Brown 4
Little Wood-Satyr 1

Monarch 5
Silver-spotted Skipper 5
Least Skipper 6
European Skipper 1
Peck's Skipper 1

HIGHLIGHTS of Mud Lake NABA Butterfly Count

Like all NABA counts this annual count in Columbia County was done in a single day (July 1) within a 15 mile diameter circle, just like Christmas Bird Counts. The main areas include Rowen Creek, Schoenenberg Marsh, Rocky Run, McKenzie, and Mud Lake Wildlife Area and, since 2014, Goose Pond. (Thanks to Mark Martin and 9 counters at Goose Pond for helping out!) The rest



Viceroy caterpillar.

of the circle was covered by Dan Sonnenberg, Jim Otto and Karl and Dorothy Legler. This was the 27th year of censusing within this circle.

Altogether we found 40 species and 804 individuals, in a total of 21.3 party-hours of observation. Here are the results:

Red-spotted Purple 5	Banded Hairstreak 35	European Skipper 20
Viceroy 6	Coral Hairstreak 4	Least Skipper 16
Eastern Comma 30	Edward's Hairstreak 5	Long Dash 2
Gray Comma 1	American Lady 4	Mulberry Wing 5
Question Mark 2	Red Admiral 71	Northern Broken-Dash 7
Summer Azure 31	Common Wood Nymph 47	Clouded Sulphur 134
Baltimore Checkerspot 1	Little Wood-Satyr 29	Orange Sulphur 11
Bronze Copper 6	Northern Pearly-Eye 6	Black Swallowtail 22
Pearl Crescent 31	Monarch 58	Eastern Tiger Swallowtail 1
Hackberry Emperor 4	Silver-spotted Skipper 25	Compton Tortoiseshell 1
Tawny Emperor 13	Delaware Skipper 34	Mourning Cloak 13
Great Spangled Fritillary 35	Dun Skipper 2	Cabbage White 38

HIGHLIGHTS of Butterflies of Swamp-Lovers Preserve

A large crowd of 45 people attended our annual Swamp-Lover's field trip. Some watched a Gray Comma and some watched Harlan Ratcliff -- a NABA member from Iowa -- photograph the Gray Comma! (Photo at left by Dan Sonnenberg.)



We found 21 butterfly species. The best sightings were Common Buckeye (a stray from the South), Gray Comma, Baltimore Checkerspot and Mulberry Wing. Many of the participants ate lunch together at the hilltop picnic shelter.



Mulberry Wing. Photo by Dan Sonnenberg.

Black Swallowtail 5	Great Spangled Fritillary 9	Red Admiral 12
Cabbage White 3	Aphrodite Fritillary 2	Common Buckeye 1
Clouded Sulphur 6	Meadow Fritillary 3	Red-spotted Purple 3
Orange Sulphur 4	Baltimore Checkerspot 15	Common Wood-Nymph 4
Coral Hairstreak 4	Eastern Comma 1	Monarch 4
Banded Hairstreak 8	Gray Comma 3	Least Skipper 3
Summer Azure 2	Mourning Cloak 3	Mulberry Wing 5

More Highlights in next issue of Badger ButterFlyer!

3 BUTTERFLIES REPORTED TO www.wisconsinbutterflies.org

Threatened and Endangered Butterflies.

It is instructive to look at the reports received this year for Endangered or Threatened species. I have listed them according to the total number of individuals reported. (That is not the same as total *individuals* since different observers might both count the same butterfly. Nevertheless total individuals sighted is a simple way of quantifying the approximate population of butterflies.

Karner Blue 617
Regal Fritillary 460
Frosted Elfin 15
Swamp Metalmark 2

Ottoe Skipper 1
Powesheik Skipperling 0
Northern Blue 0

The **Karner Blue** is highest in abundance because A) it is not actually threatened in Wisconsin but B) it is Endangered from a *national* perspective because it has disappeared from much of its historical range -- to the point where Wisconsin has the primary remnant population. It is listed as Federally Endangered and as a result efforts have been made to maintain or increase the range in Wisconsin. The **Regal Fritillary** is an interesting case because it is listed as Endangered in Wisconsin but still has a substantial population here. The Regal has also disappeared from the eastern half of its range. The (Threatened) **Frosted Elfin** had only 15 reports this year, indicating a much lower population than Karner or Regal. The Endangered **Swamp Metalmark** had only 2 sighted. They are known only from 2 small sites in Wisconsin. The Endangered **Ottoe Skipper**, **Powesheik Skipperling** and **Northern Blue** are now so low in population that they are in absolute peril in Wisconsin!

Some Notably Higher Populations.

Butterflies that were doing exceptionally well this year were Eastern Comma, Hackberry Emperor, Tawny Emperor, Compton Tortoiseshell and Red Admiral. We have had big invasions of Red Admirals from the South in 2007, 2010, and 2012. This year the Red Admiral numbers are up again, but not as high as in those top years.

Butterflies to Look for in coming weeks.

The following butterflies will have their 2nd brood in the 2nd half of July:

Black, Eastern Tiger, and Giant Swallowtails, Pink-edged Sulphur, Gorgone Checkerspot, Pearl Crescent, Red-spotted Purple, Viceroy, Silver-spotted Skipper, Columbine Duskywing, Common Sootywing and Common Roadside Skipper.

[Keep sending reports to wisconsinbutterflies.org](http://wisconsinbutterflies.org)

4 The 20th Annual Texas Butterfly Festival !

Registration is open

SATURDAY, OCT. 31 - TUESDAY, NOV. 3, 2015

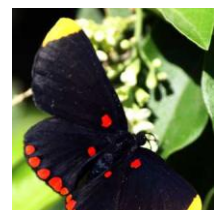
Come to the Rio Grande Valley!

One of the most biologically diverse areas in North America sits along the border, between Texas and Mexico, where the Rio Grande winds its way toward the Laguna Madre. The Lower Rio Grande Valley (LRGV), in deep South Texas, is home to more than 1,200 different species of plants, 500 species of birds, 200 vertebrate species, roughly 300 species of butterflies, and over 90 species of dragonflies!

NABA's **National Butterfly Center** is honored to host the **20th Annual Texas Butterfly Festival**. From October 31 - November 3, 2015, attendees will spend 3 days exploring renowned public lands and private properties with world-class trip leaders and expert guides. The Festival is taking place during prime butterfly season, when you may reasonably expect to see more than 60 species in a day.

FOR MORE INFORMATION OR TO REGISTER, GO TO THE WEBSITE:

<http://texasbutterflyfestival.com/>



**Red-bordered
Pixie**

The Badger ButterFlyer flits to you every month (every other month in winter). The next issue will be in AUGUST.

Officers of SWBA:

President: Dr. Douglas Buege
djbuege@gmail.com

Vice-President: Karl Legler
karlndot@charter.net

Secretary: Dorothy Legler

Treasurer: Ginny Nelson

Other SWBA contributors:

e-Newsletter Editor: Karl Legler
karlndot@charter.net

Webmaster: Dan Sonnenberg

Butterfly Reporting: Mike Reese at
www.wisconsinbutterflies.org

Speaker's Bureau: Dorothy Legler

Dr. Douglas Buege

NABA Liaison: Joan Braune

SWBA

The Southern Wisconsin Butterfly Association (SWBA) is a non-profit Wisconsin chapter of the North American Butterfly Association (NABA) which is the largest organization of people interested in butterflies. SWBA promotes public awareness, conservation and the enjoyment of butterflies through observation with close-focusing binoculars, chapter field trips, educational meetings, photography, butterfly gardening, monitoring and travel. SWBA's events are open to the public.

To become a member of SWBA simply join NABA. Membership benefits include 2 color quarterly magazines "American Butterflies" and "Butterfly Gardening". Please use the membership form on the SWBA Web site at <http://www.naba.org/chapters/nabawba/>

Our e-Newsletter, the Badger ButterFlyer, will be published monthly in spring to fall, and every other month in winter. Send any news notes to the editor, Karl Legler, at karlndot@charter.net

To stop receiving this e-Newsletter simply send an email to the above editor's address.