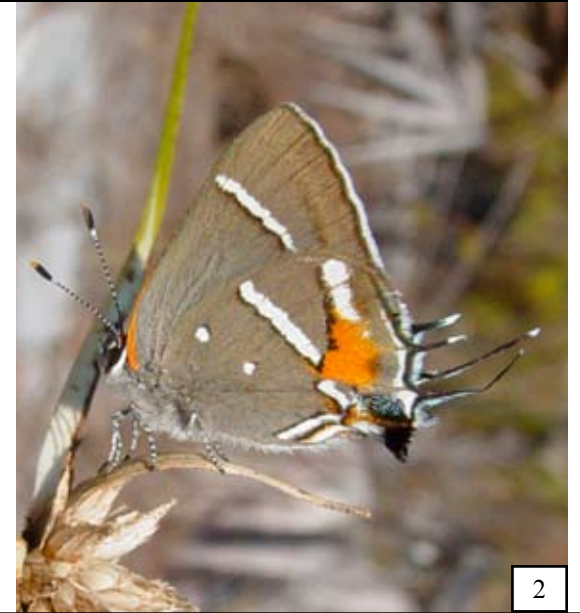


Go Get Set On Your Marks

The 55 species of scrub-hairstreaks (genus *Strymon*) constitute roughly five percent of the 1000+ species of hairstreaks found in the New World. Although only one species of scrub-hairstreak is widespread in the United States, occurring north to Canada, seven species are resident in the United States, while another seven species occur as strays or periodic colonists. An additional five species are found in Mexico, bringing our treatment to 19 species.

Although a few species, such as Bartram's Scrub-Hairstreak, are quite flashy, most scrub-hairstreaks are rather small and basically brown or gray. But, being hairstreaks, they are endearing none-the-less!



Scrub-Hairstreaks

The majority of these species are found in scrubby, disturbed and/or dry habitats; hence the name scrub-hairstreak.

The first task in identifying a scrub-hairstreak to species is to realize that one is looking at a species of scrub-hairstreak. In the field, when I have seen a species of scrub-hairstreak that I haven't seen before, in each case I've felt confident that it was a scrub-hairstreak. Unfortunately, when, in writing this article, I try to think how I can describe "scrub-hairstreakness" to others, I come up blank! As you can see by comparing the photos on this and the previous page, underside wing patterns vary considerably among the various species. The pattern on Mallow Scrub-Hairstreaks is actually very similar

to that on Ceraunus Blues, while Bartram's Scrub-Hairstreaks loosely resemble White-M or 'Southern' Oak Hairstreaks, in the genera *Parrhasius* and *Satyrium* respectively.

We can group the species into six pattern groups. Some of these pattern elements seem to define a natural group (e.g., group C) while others are only a visual aid. Patterns are A: Very little pattern basad to the postmedian line, yielding a "clean" appearance. B. Both FW and HW postmedian lines with prominent white. C. HW base with two prominent dark spots. D. HW base with white/pale bands. E. HW postmedian band with chain of brownish spots. F. HW with much red and male FW above with some iridescent blue.

1. Mallow Scrub-Hairstreak. Oct. 24, 2003. Sharyland, Hidalgo Co., TX.

2. Bartram's Scrub-Hairstreak. Feb. 7, 2003. Big Pine Key, Monroe Co., FL.

1